

Statement

Our mission is to design and deliver projects through a collaborative and responsible working culture that encourages staff, clients and end-users alike to create solutions towards more positive and sustainable ways of life.

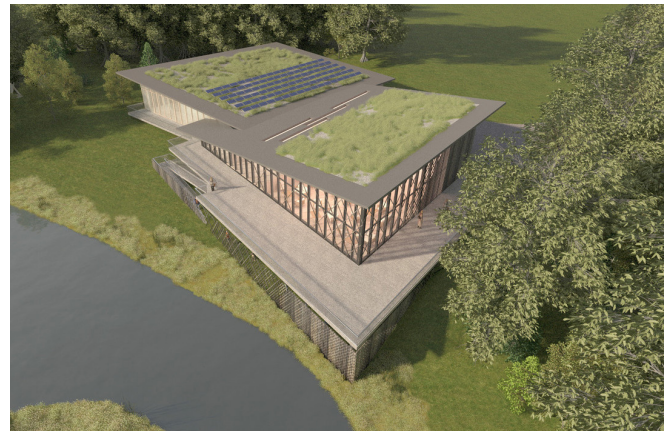
Through our core principles, our environmental policy and our own design delivery process, we express our commitment to the Quattro mission, the protection of the environment and the principle of pollution prevention that is appropriate to the purpose and context of the organisation. We recognise that within the overall scope of our operations and services there are both adverse impacts and positive opportunities within the environmental, social and economic aspects of sustainable development.

We will continually improve our internal processes to ensure compliance with the ISO 14001:2015 environmental management systems standard and reduce the environmental impact of our operation. We commit to working collaboratively with clients and end-users to engage them in sustainable building design and encourage them to reduce the adverse impacts of their activities.

This document is displayed and communicated within the organisation and made available to all interested parties.

Aims

- To understand, measure and continually review our operational environmental impact.
 - To provide a framework for setting environmental objectives.
 - To improve the environmental impact of the Quattro office.
 - To encourage our clients to adopt sustainable building design and construction methods.
 - To maintain our reputation as a centre of excellence for sustainable building design.
 - To continue our commitment to meeting relevant environmental legislation and regulations.
- 1.1** We recognise that our operations have an effect on the local, regional and global environment. We will ensure that all staff are trained in our environmental management policy and given guidance in its implementation.
 - 1.2** As a consequence of this, the management are committed to continuous improvements in environmental performance and the prevention of pollution. Robert Walder is responsible for the implementation and monitoring of this environmental policy.
 - 1.3** Current environmental regulations, laws and codes of practice will be regarded as setting the minimum standards of environmental performance.
 - 1.4** We will implement measures to help the business and its employees to use 'green transport', for example, providing facilities for cyclists, encouraging car sharing, and encouraging the use of public transport by providing information on local routes.



- 2** We will dispose of all waste in a responsible manner, ensuring that we always comply with the Duty of Care Regulations. Any services used for the storage or disposal of waste will be checked to ensure that appropriate licences are held.
- 3** If any notice or prosecution related to a breach of environmental legislation is served against the business by the Environment Agency, a local authority, or another regulatory body, we will immediately notify all bodies with whom accreditation has been registered and provide full details of the incident.
- 4** We will attempt to reduce or eliminate the use of ozone depleting chemicals (CFC, Halon, 1.1.1 Trichloroethane, HCFC), tropical hardwood from forests which have not been independently certified as sustainable.
- 5** We will try, where possible, to use suppliers who are willing to take away packaging for re-use or recycling and will consider the environmental impact of any purchases.
- 6** We will try to reduce the energy and water consumption of the business and minimise CO2 emissions. We will invest in the improved energy efficiency of products we use and investigate environmentally safe and sustainable energy sources.
- 7** We will ensure that dust, noise and odour do not cause a nuisance to the community surrounding the place of business.
- 8** We will try to reduce waste production and carry out recycling as much as possible.
- 9** In the office environment, paper will be used sensibly, with measures to re-use and recycle waste paper, and the increased use of electronic communication to reduce the need for paper use.
- 10** We will ensure that no polluting matter enters surface waters or groundwater.
- 11** We will try to use sub-contractors and suppliers who comply with the requirements of our environmental management policy, and will help sub-contractors and suppliers to comply with environmental laws and regulations as much as possible.